

STEEL PIPE SIZE CHART

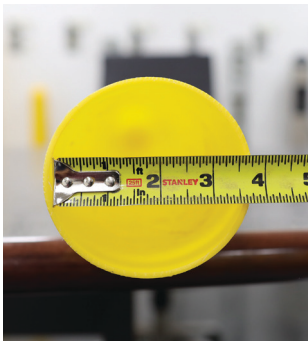
STEEL DIMENSIONS

SLEEVE DIMENSIONS

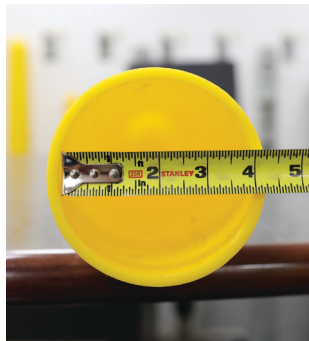
Nom. Size (in.)	Sch.	Lb/Ft	Wall	I.D.	O.D.	Approx. Steel Circum.	I.D.
3" (3.5" O.D.)	40	7.58	0.216"	3.068"	3.5"	11"	3.625"
	80	10.25	0.3"	2.9"			
3.5" (4" O.D.)	40	9.11	0.226"	3.548"	4"	12.5"	4.125"
	80	12.51	0.318"	3.364"			
4" (4.5" O.D.)	40	10.79	0.237"	4.026"	4.5"	14" - 15"	5"
	80	14.98	0.337"	3.826"			
5" (5.563" O.D.)	40	14.62	0.258"	5.047"	5.563"	17.5"	5.875"
	80	20.78	0.375"	4.813"			
6" (6.625" O.D.)	40	18.97	0.28"	6.065"	6.625"	21" - 22"	7"
	80	28.57	0.432"	5.761"			
8" (8.625" O.D.)	40	28.55	0.322"	7.981"	8.625"	27" - 27.5"	8.875"
	80	43.39	0.5"	7.625"			
10" (10.75" O.D.)	40	40.48	0.365"	10.02"	10.75"	33.5" - 34"	10.875"
	80	64.43	0.594"	9.562"			
12" (12.75" O.D.)	40	53.52	0.406"	11.938"	12.75"	40.25"	12.875"
	80	88.63	0.688"	11.374"			

STEEL PIPE SIZE CHART

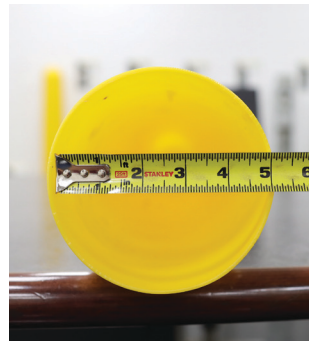
**3" Cover
for 3" Pipe**



**3 ½" Cover
for 3½" Pipe**



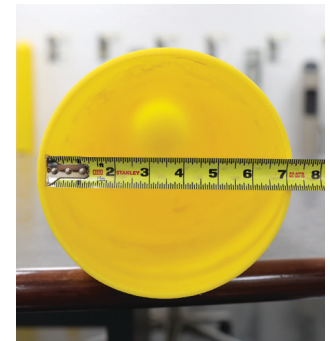
**4" Cover
for 4" Pipe**



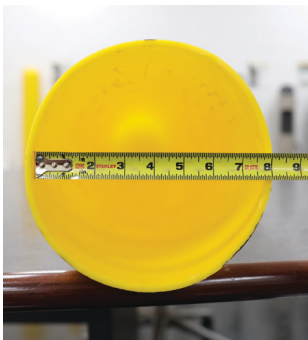
**5 ½" Cover
for 5" Pipe**



**6" Cover
for 6" Pipe**



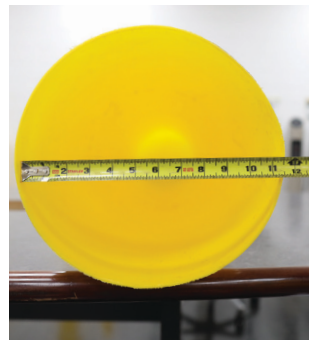
**7 ½" Cover
for 7" Pipe**



**8" Cover
for 8" Pipe**



**10" Cover
for 10" Pipe**



**12" Cover
for 12" Pipe**

